

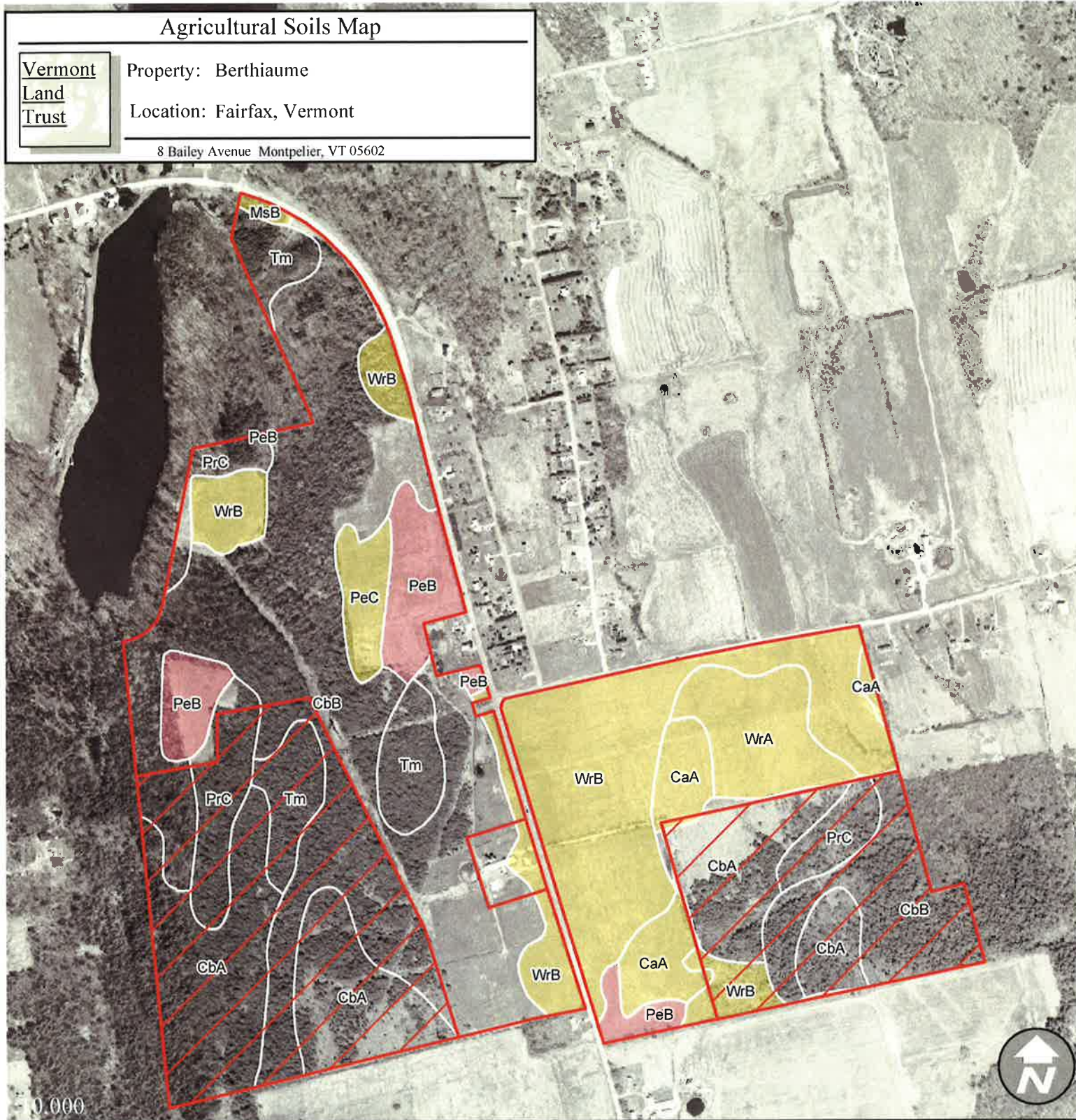
# Agricultural Soils Map

Vermont  
Land  
Trust

Property: Berthiaume

Location: Fairfax, Vermont

8 Bailey Avenue Montpelier, VT 05602



| Symbol | Name  | Ag Value | Status    | Acres |
|--------|---|----------|-----------|-------|
| CaA    | CABOT STONY FINE SANDY LOAM, 0 TO 3 PERCENT SLOPES            | 6d       | Statewide | 11    |
| CbA    | CABOT EXTREMELY STONY FINE SANDY LOAM, 0 TO 3 PERCENT SLOPES  | 11       | Not Rated | 1     |
| CbB    | CABOT EXTREMELY STONY FINE SANDY LOAM, 3 TO 15 PERCENT SLOPES | 11       | Not Rated | 84    |
| MsB    | MISSISQUOI LOAMY SAND, 3 TO 8 PERCENT SLOPES                  | 6        | Statewide | 1     |
| PeB    | PERU STONY FINE SANDY LOAM, 3 TO 8 PERCENT SLOPES             | 3        | Prime     | 17    |
| PeC    | PERU STONY FINE SANDY LOAM, 8 TO 15 PERCENT SLOPES            | 7        | Statewide | 6     |
| PrC    | PERU EXTREMELY STONY FINE SANDY LOAM, 3 TO 15 PERCENT SLOPES  | 11       | Not Rated | 5     |
| Tm     | TERRIC MEDISAPRISTS   | 11       | Not Rated | 11    |
| WrA    | WESTBURY STONY FINE SANDY LOAM, 0 TO 3 PERCENT SLOPES         | 6d       | Statewide | 14    |
| WrB    | WESTBURY STONY FINE SANDY LOAM, 3 TO 8 PERCENT SLOPES         | 6d       | Statewide | 56    |

Prime  
Statewide

|              | Acres      | %  |
|--------------|------------|----|
| Prime        | 17         | 8  |
| State        | 88         | 43 |
| Other        | 101        | 49 |
| <b>Total</b> | <b>206</b> |    |

7-12-15