

Sonoma County Agricultural Preservation + Open Space District



Foundation + Guiding Policies



- **Visionary Founders**
- **1989 General Plan – Open Space Element**
- **Enabling Legislation**

Foundation + Guiding Policies

1989 Sonoma County General Plan:

Open Space Program 4: **Establishment of an Open Space District**

Program Description: Consider **a ballot measure** to establish an **Open Space District** to acquire and administer open space lands. Include an **appropriate funding source, such as a special tax**, to finance acquisition of partial or in-fee interests in lands, including purchase of development rights on a voluntary basis, in designated open space areas.

Foundation + Guiding Policies

- Expenditure Plan guides our work
- Funding mechanism (sales tax)

VOTER'S PAMPHLET
MEASURES, ANALYSES AND ARGUMENTS
(whichever is applicable to your ballot)
Arguments in support of, or in opposition to, the proposed laws are the opinions of the authors.

FULL TEXT OF MEASURE F
THE SONOMA COUNTY OPEN SPACE, CLEAN WATER AND FARMLAND PROTECTION MEASURE
ORDINANCE NO. 5677R OF THE COUNTY OF SONOMA, STATE OF CALIFORNIA
EXTENDING THE IMPOSITION OF A TRANSACTIONS AND USE TAX TO BE
ADMINISTERED BY THE STATE BOARD OF EQUALIZATION

Section 1. TITLE. This Ordinance shall be known as the Sonoma County Open Space, Clean Water and Farmland Protection Measure. The County of Sonoma, hereinafter shall be called "County." This Ordinance shall be applicable in the incorporated and unincorporated territory of the County.

Section 2. EFFECTIVE DATE; OPERATIONAL DATES; ADMINISTRATION.

A. This Ordinance shall become effective upon its approval by a two-thirds majority of the electors voting on the measure.

B. This Ordinance shall become operative on April 1, 2011; provided, however, that the Sonoma County Agricultural Preservation & Open Space 2006 Expenditure Plan ("the 2006 Expenditure Plan"), attached hereto as Exhibit "A,"

the 2006 Expenditure Plan constitutes the statement of the specific purposes for which the revenue generated by this Ordinance may be expended, (2) the expenditure of the revenue generated by this Ordinance shall be restricted to the purposes stated in Exhibit "A," (3) the revenue generated by this Ordinance shall be deposited into the "Open Space Special Tax Account," and (4) the County Auditor shall prepare and file with the Board of Supervisors reports meeting the requirements of Government Code §50075.3. The Sonoma County Open Space Authority shall provide specified fiscal oversight as provided in an agreement between the County and the District.

Section 5. CONTRACT WITH STATE. Prior to the Operative Date, the County shall contract with the State Board of Equalization to perform all functions incident to the administration and operation of this transactions and use tax Ordinance; provided, that if the County shall not have contracted with the State Board of Equalization prior to the Operative Date, it shall nevertheless so contract and in such a case the operative date shall be the first day of the first calendar quarter following the execution of such a contract.

Section 6. TRANSACTIONS TAX RATE. For the privilege of selling tangible personal property at retail, a tax is hereby imposed upon all retailers in the incorpo-

Foundation + Guiding Policies

Expenditure Plan:

*The purpose of this expenditure plan is to **implement** the Sonoma County General Plan and the general plans of the County's incorporated cities by **preserving agricultural land use and open space**. This purpose will be accomplished primarily through the purchase of development rights from **willing sellers**.....*

...

*3. Agriculturally productive lands include **working farms and ranches** and other lands used for the **production of food, fiber, and plant materials** and the raising and maintaining of **livestock and farm animals**.*

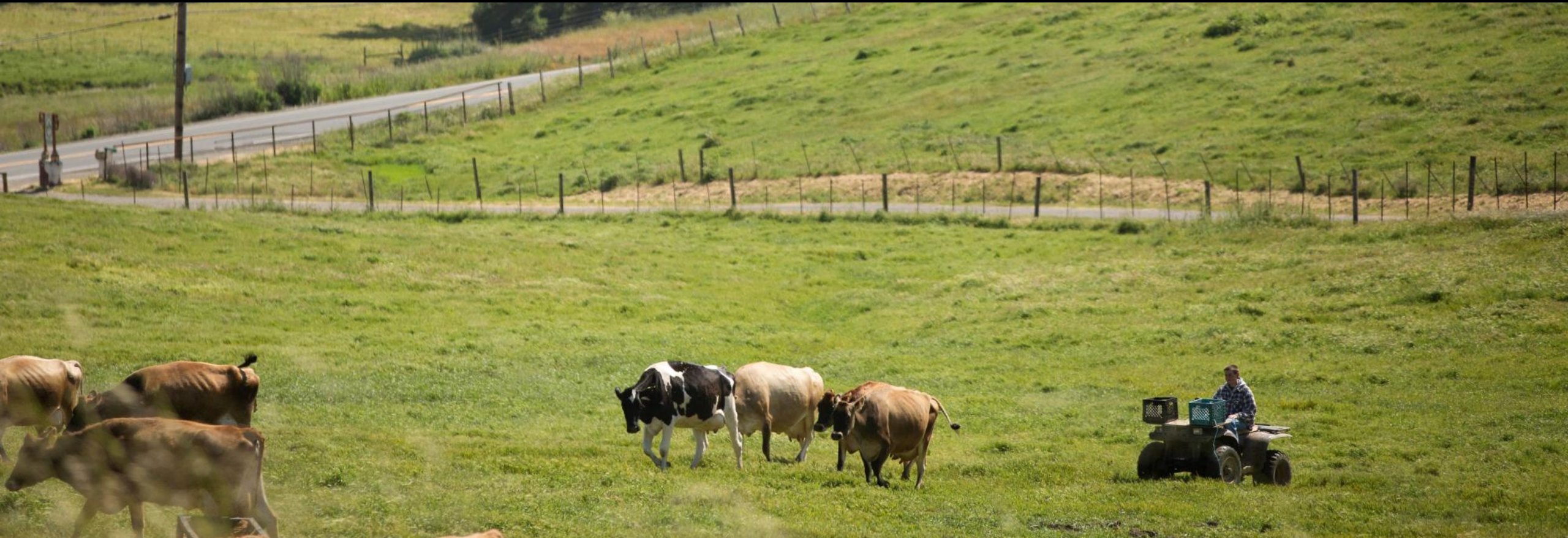
113,000 Acres Protected Forever

Over 10% of Sonoma County



31,528

Acres of grazing land





38

**Properties
producing
local food
and wine**

Agricultural Project Examples| **Easements**



Duckworth

Agricultural Project Examples| **Lease to purchase**



Tierra Vegetables

Programs

Urban Open Space

- **Public land**
- **Food Production/Sale**
- **Access and Education**



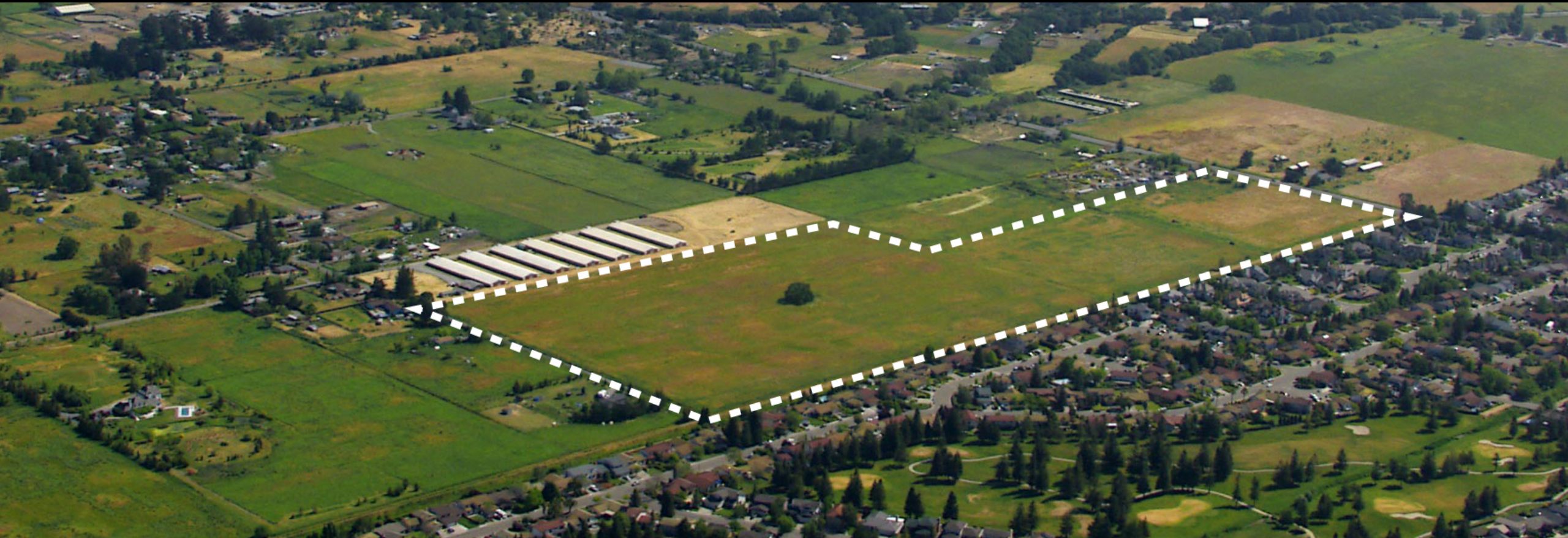
Programs

County Lands for Food Production

- **Public land**
- **18 properties**
- **Lack of infrastructure**
- **Financial limitations**



Challenges| **Agriculture and Endangered Species**



Incubator Farm in California Tiger Salamander Habitat

Challenges| **High Value Crops**



Vineyard and Cannabis